



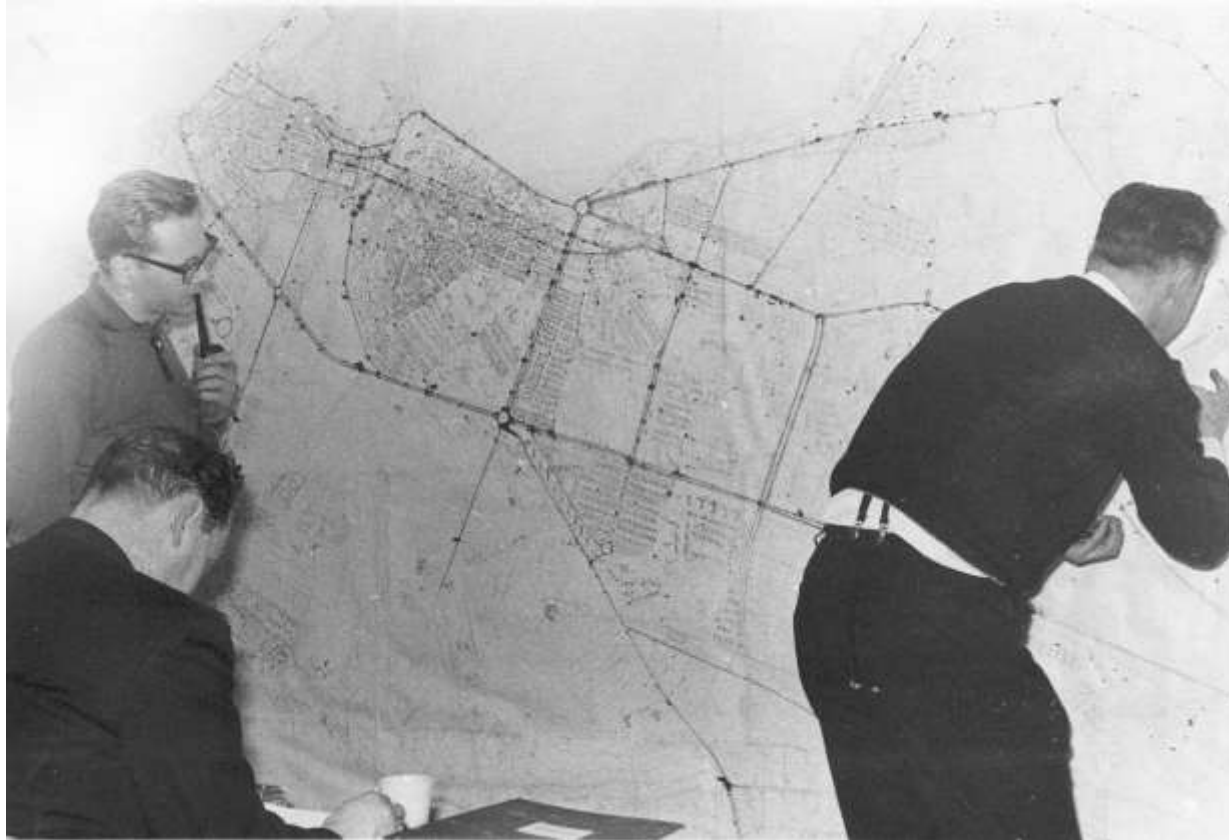
Veðurstofa Íslands

Visindi á vakt

Frá ofurtölvu til notanda

Miðlun á veðurspám á nýjum vef Veðurstofunnar

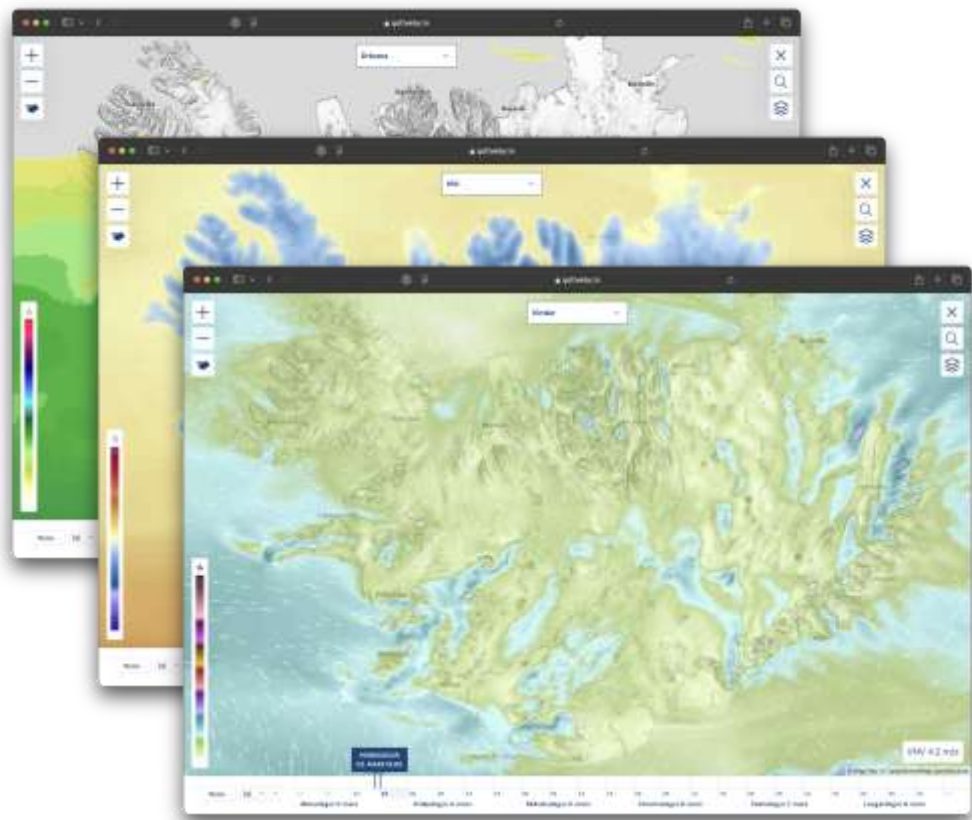
“I like big maps and I cannot lie ...”







**„Hættum að afhenda vefnum
myndir af gögnum, afhendum
heldur gögnin sjálf“**



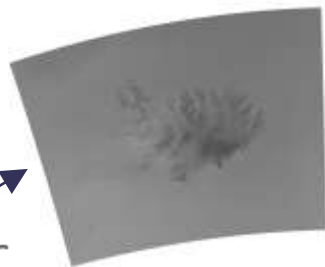
Frá ofurtölvu til notanda

Gögn

Þjónustur

Vefsíða

Ofurtölva



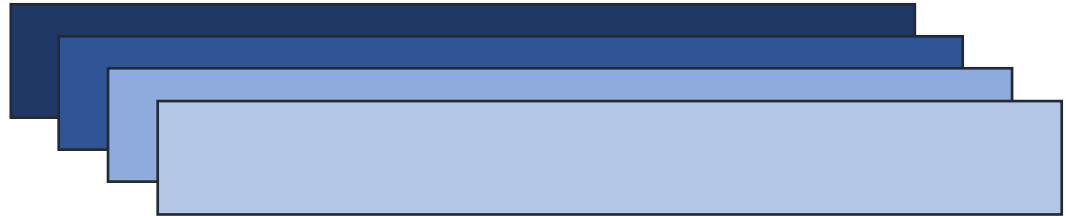
Kortapekjur



TÍMINN

Mælingar /
veðurathuganir

Líkön /
Veðurspár



Ný spá á **3** klst. fresti sem nær **72** klst. fram í tímann

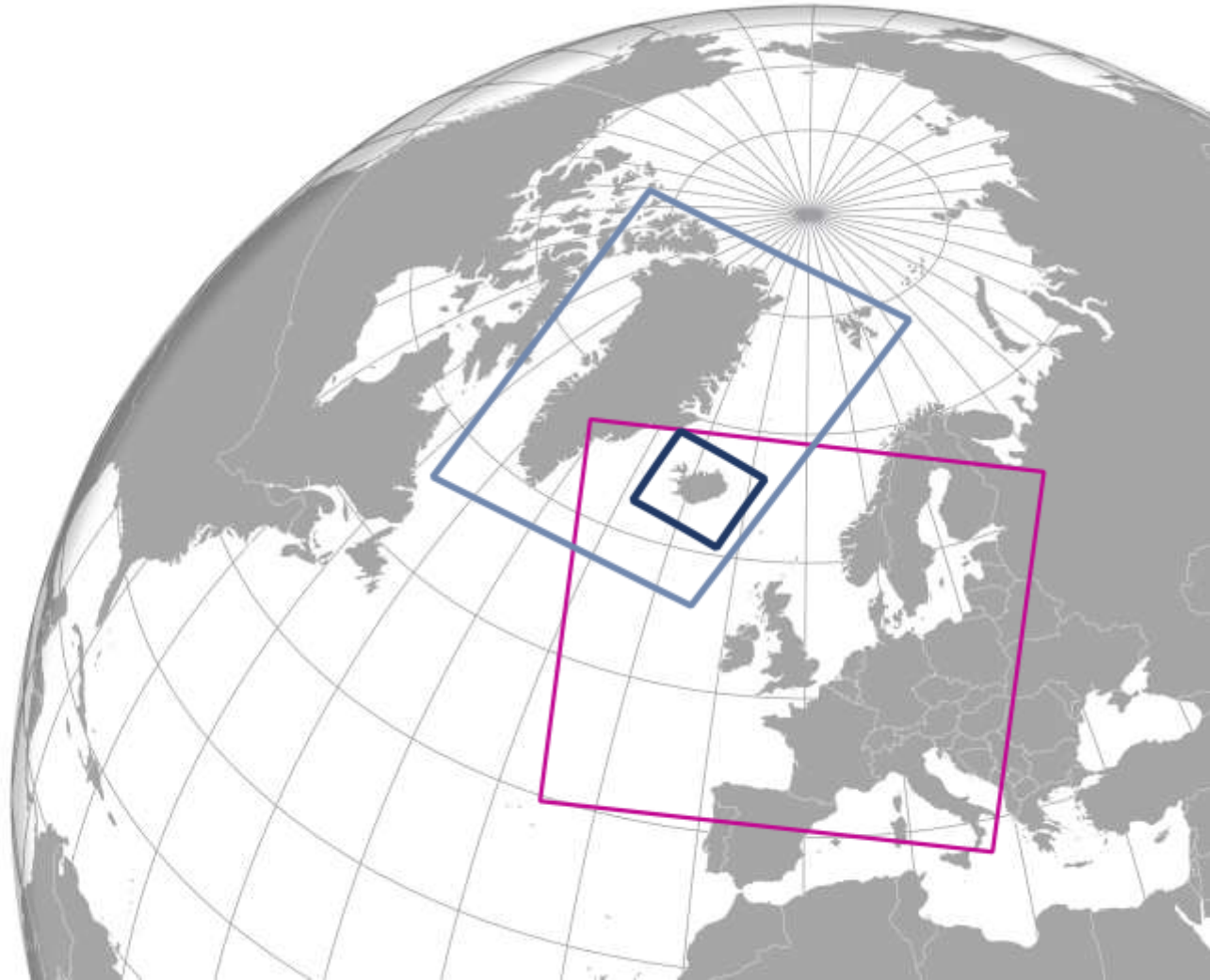
RÚMIÐ

IG

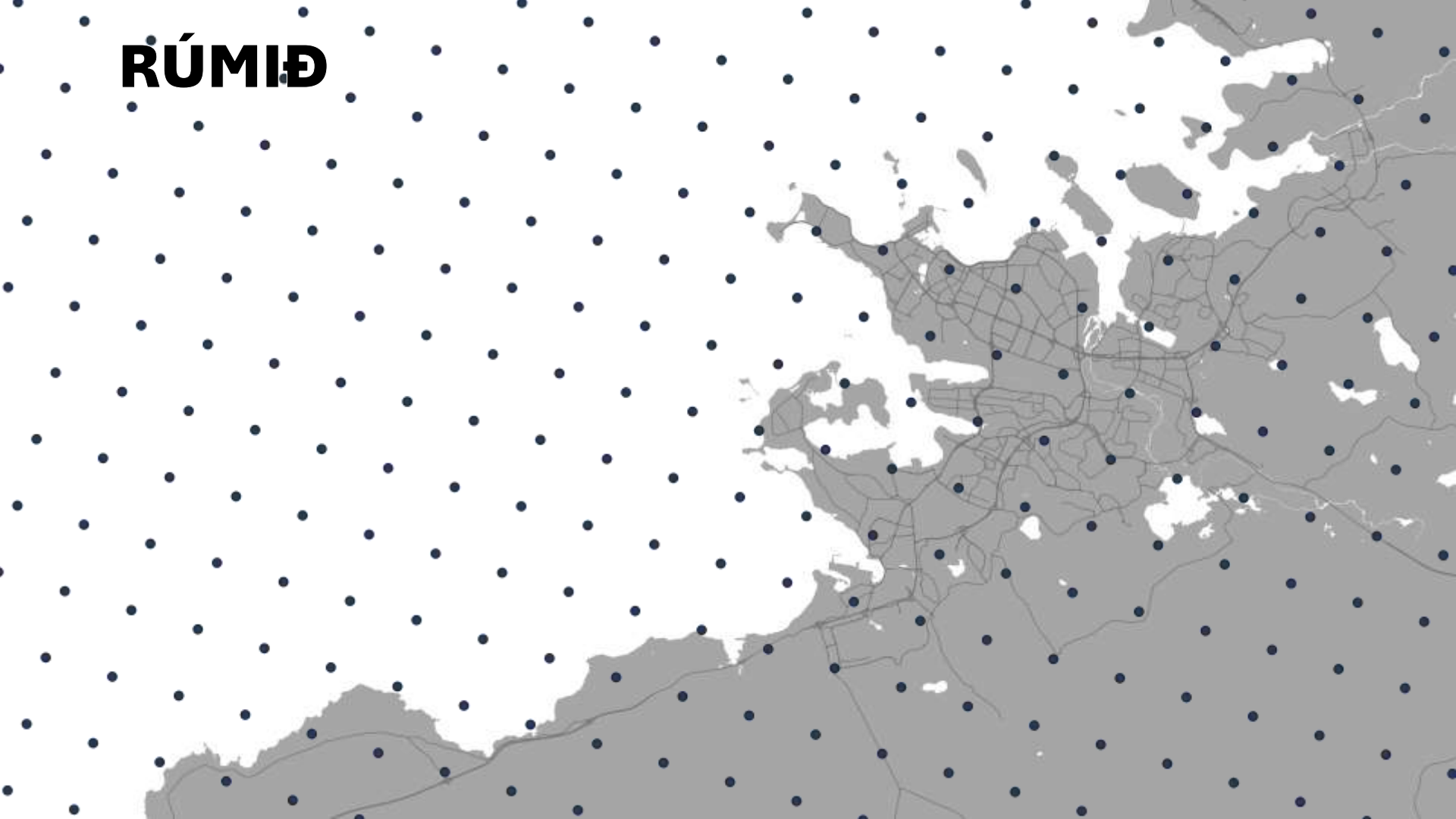
(Iceland-Greenland)

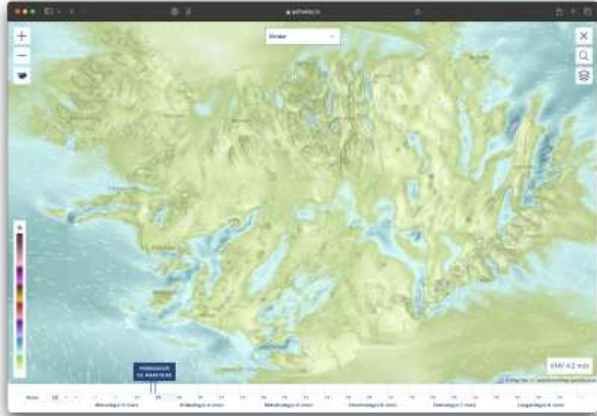
DINI

(Denmark-Iceland-
Netherlands-Ireland)

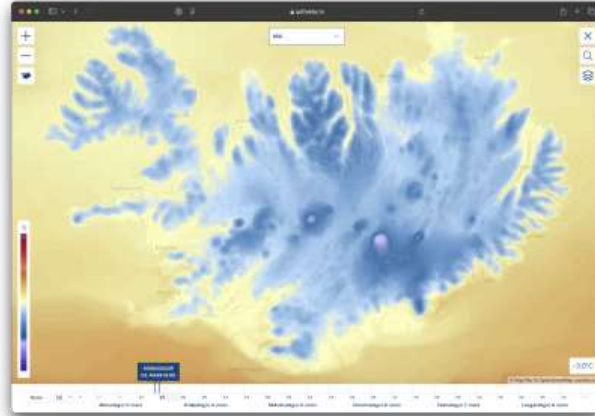


RÚMIÐ

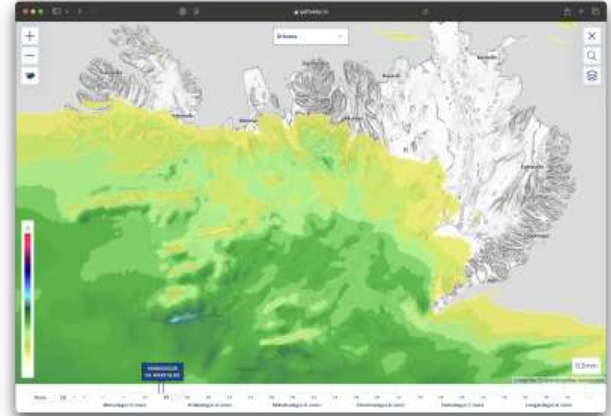




Vindátt + vindstyrkur



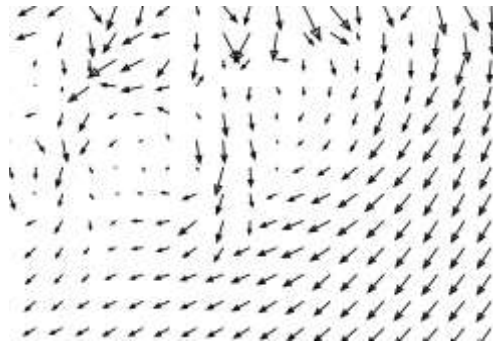
Hiti



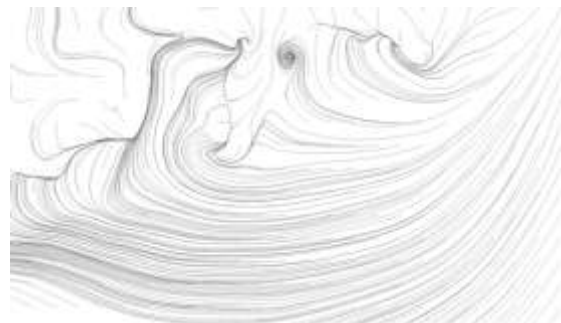
Úrkoma



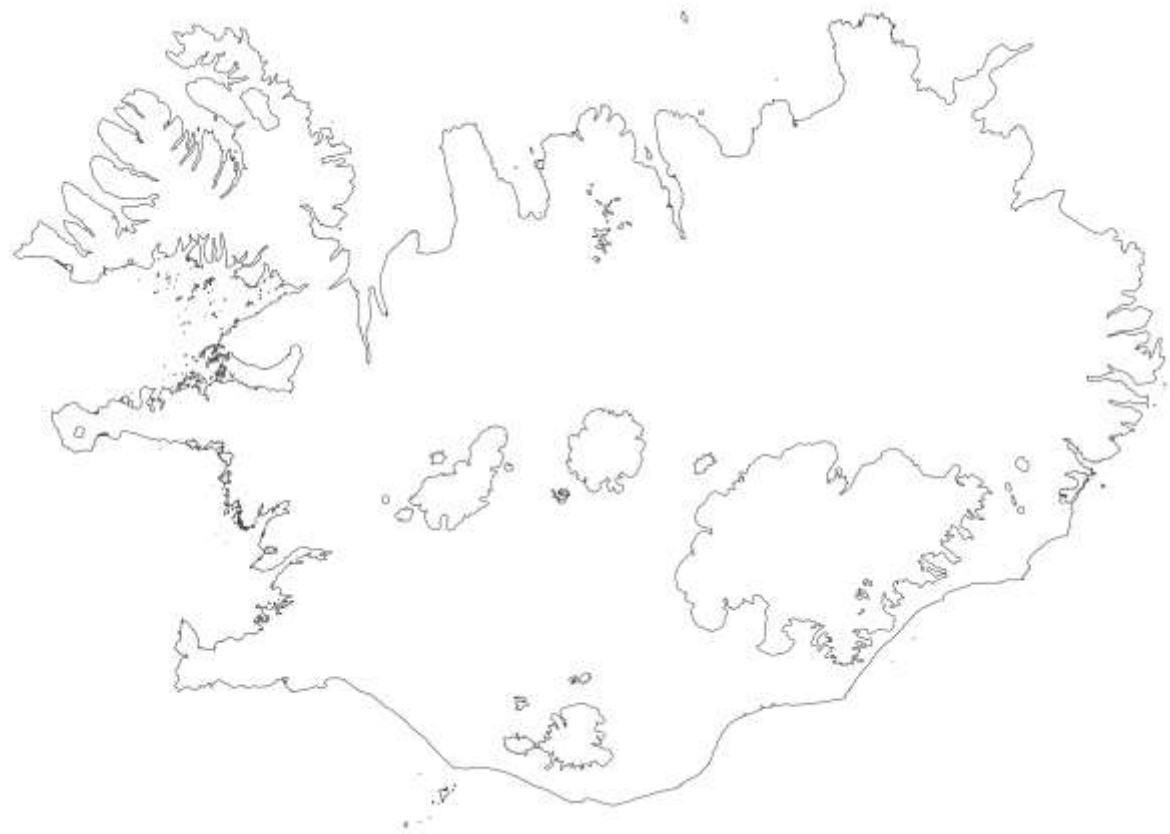
litur



tákn

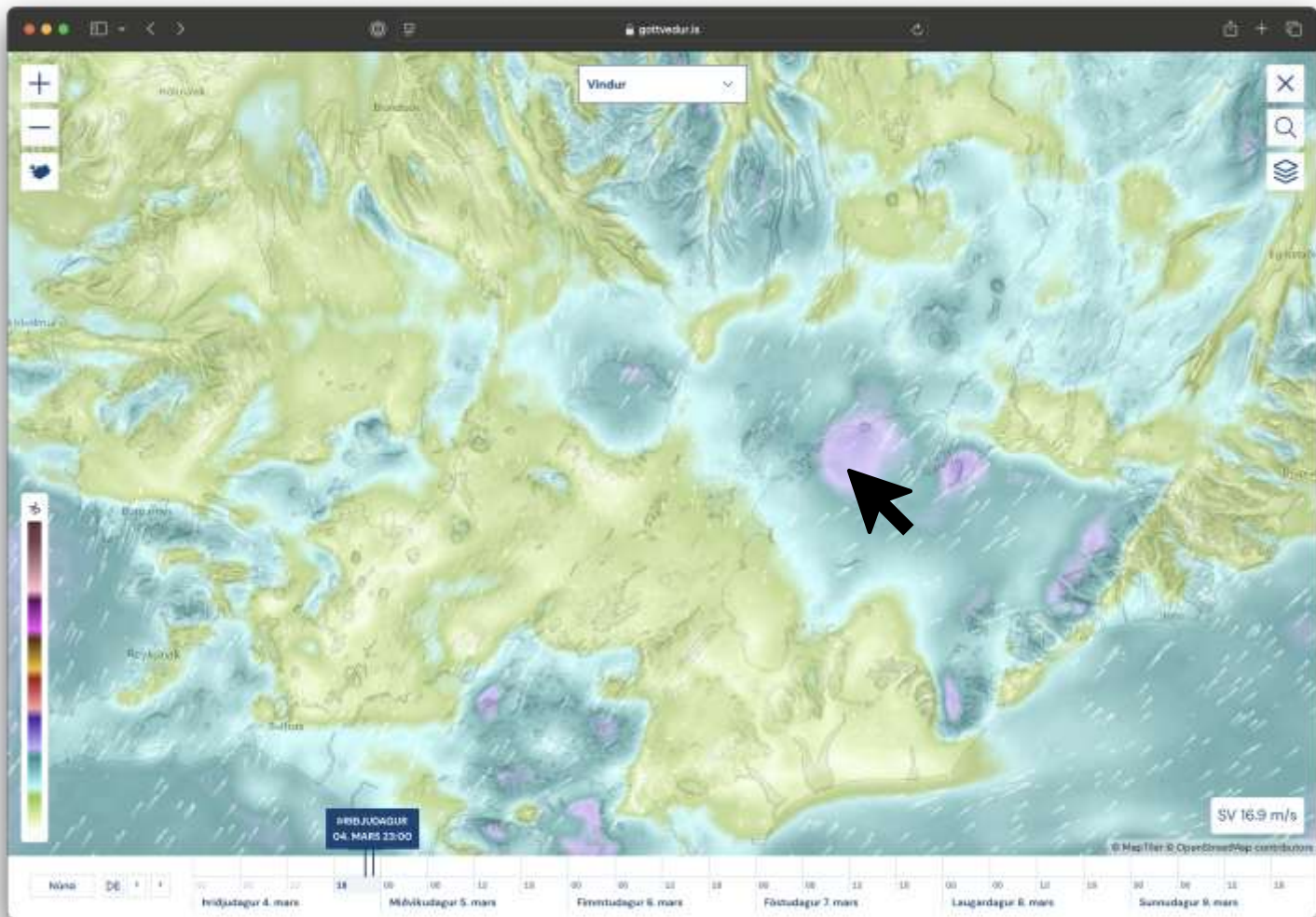


hreyfing











@RagnarHeidar